

Bethany Hall

FOR A NEW BEGINNING

1109 Franklin Rd., S.W., Roanoke, VA

(540) 343-4261

www.bethanyhall.org

"Like us" on Facebook

A United Way Partner



Staff Recognition

Photograph

*Left to right: Gerri Bayer,
Jenny Neel, Luisi Cano,
Lynda McGarry, Felicia Davis,
Denise Yopp, Lauren Sutphin,
Stace Todd, Crystal Ward,
Stacy Robertson, Melissa Swan*

Graduations! Congratulations to...

*Christina and her daughter, Maddie
January 19*

*Kelly
January 30*



Thanks to everyone who made donations to us in 2011! From our annual campaign to unsolicited gifts, we could not survive without your graciousness!

February Calendar of Events

February 1-12 – Orders taken for singing Valentine's
February 21-5:15 p.m. – Governance & Finance Committee Meets
6:00 p.m. – Board Meeting

Mission Statement:

To provide women recovering from substance abuse a safe, supportive, and healing environment as they acquire the tools for independent living.

February 2012

...

Ah, the month of "love".

The Beatles sang, "All you need is love, love, love is all you need."

Often, the women that come to us feel anything but loved.

Whether from their own making or their inability to see that others love them or to love themselves, they often feel hopeless and empty. At

Bethany Hall, they are encouraged to "let others love them until they can love themselves." This is sometimes a difficult process for them, but eventually they come to believe, and actually love themselves. This is a beautiful process to watch.

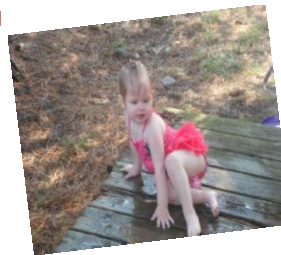
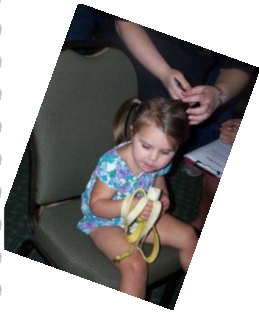
Perhaps the Beatles were onto something.....



Singing Valentines!

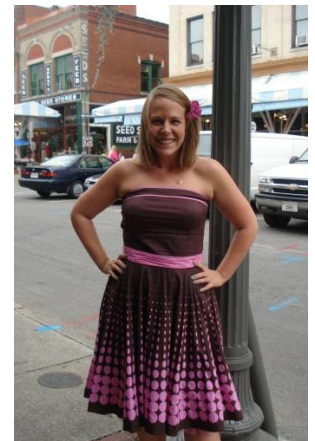
*Order yours soon - \$25 for delivery and singing!
Song, flower, and our famous chocolate covered peanut butter
in the shape of a heart!*

Call Jenny at (540) 343-4261 x. 308 today



Staff Member of the Month

**Each month this year will feature one of our staff members
Jennifer Neel, MS, CSAC, Senior Therapist - 7 years of service**



The Virginia Department of Behavioral Health and Developmental Services reports that women are more likely to remain in treatment and evidence the greatest benefits when the services they receive are gender specific, family focused, allow the women to keep her children in treatment with her and include both clinical and support services.

Ways you can help save a life!

- ***Financial donations***
- ***Gently used clothing or household items***
- ***Donations of paper supplies***
- ***Donations of canned foods***

Special thanks to 101.5 "The Music Place" for their public service announcements for Bethany Hall and for including us in their "Community Conversations" series.

Board of Directors:

**Mike Norton, President; Hope Cothran, Vice-President; Rebecca Cote, Treasurer; Angie Baughman, Secretary
Mary Atwell, Laura Bradford Godfrey, Dina Hackley-Hunt, Frazier Hughes, Dava Hensley, Anne Macfarlane, Leslie Fields Matney, Sally Nichols,
Pat McHenry, Paula Kirtley, Jacqueline Morton-Johnson
Denise Yopp, Executive Director**